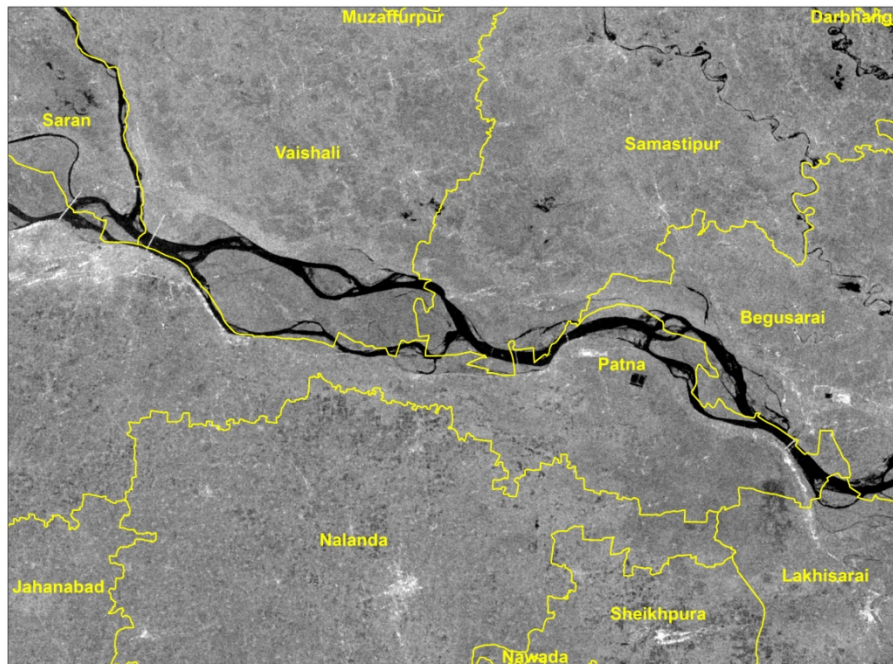
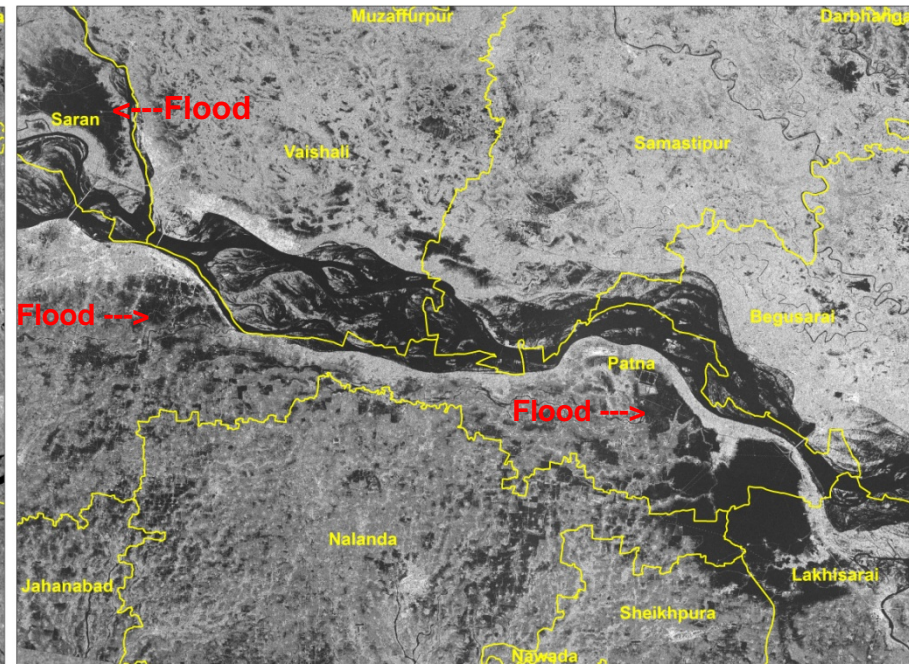


BIHAR FLOODS - 2019

- Heavy incessant rains were reported in Bihar state during last week of September, 2019 inundating various districts of the State. NRSC acquired RESOURCESAT-2/2A, SENTINEL 1, MODIS, RADARSAT-2 SAR satellite data to map & monitor the flood inundated areas on a continuous basis.
- The following satellite images show pre & post flood situation.



**Pre Data : 04 August 2019
(Radarsat 2 SAR)**

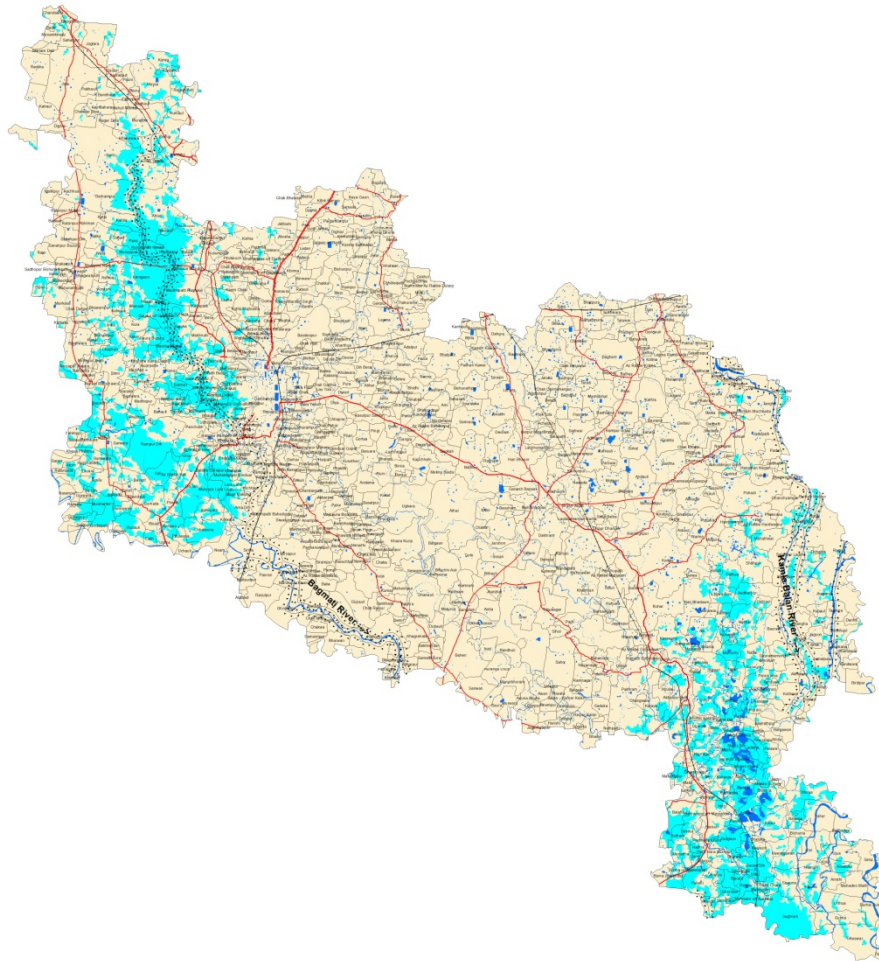


**Post Data : 30 September 2019
(Sentinel 1 SAR)**

BIHAR FLOODS - 2019

Flood Inundated areas in Darbhanga District of Bihar State

Based on the analysis of Radatsat-2 Image of 28-Sep-2019(1800hrs)



Note: When publishing this map as part of any report, source may be indicated as " NRSC (2019) - Flood Inundated Inundated areas in Darbhanga district (as on 28-Sep-2019)" dated 30.09.2019 DSC/NDEM Map no : 2019/69, NRSC/ISRO, Hyderabad

For official use

DISASTER EVENT ID: 02-FLD-2019-BR
MAP ID: 2019/69

Date of Issue : 30.09.2019

Location Map



About the Event

Heavy rains are reported in Bihar during fourth week of September 2019 and caused steady rise in water levels in parts of Bihar state. According to reports, River Kamala, Burhi Gandak, Bagmati, Kosi, Ganga and Sone were reported to be flowing above danger level.

(Source: News Media, CWC)

Satellite Observations

This map highlights the inundated areas due to heavy rains in Darbhanga District of Bihar as on 28 Sep 2019 .

Satellite data used

Pre Flood:
Satellite: ResourceSat-2
Sensor: AWIFS
Date of Pass: 13-Jan-2019

Post Flood:
Radatsat-2 SAR - 28-Sep-2019
1800 hrs

Other data used

NRC Landuse/Landcover Data

Legend

- Embankment
- District Road
- National Highway
- State Highway
- Railway
- NormalRiver/ Water Bodies
- Village Boundary
- Flood Inundation



0 2 4 8 12
Kilometers

This product is prepared on rapid mapping mode for immediate use and sharing amongst official agencies. This provides preliminary results.

Flood inundation may include rain water accumulation / flood water in low lying areas.

All geographic information has limitations due to the scale, resolution, date and interpretation of the original source materials.

No ground verification is done.

DSC / NDEM
National Remote Sensing Centre, ISRO
Dept. of Space, Govt. of India
Hyderabad- 500 037
E-Mail: flood@nrsc.gov.in
www.nrsc.gov.in

