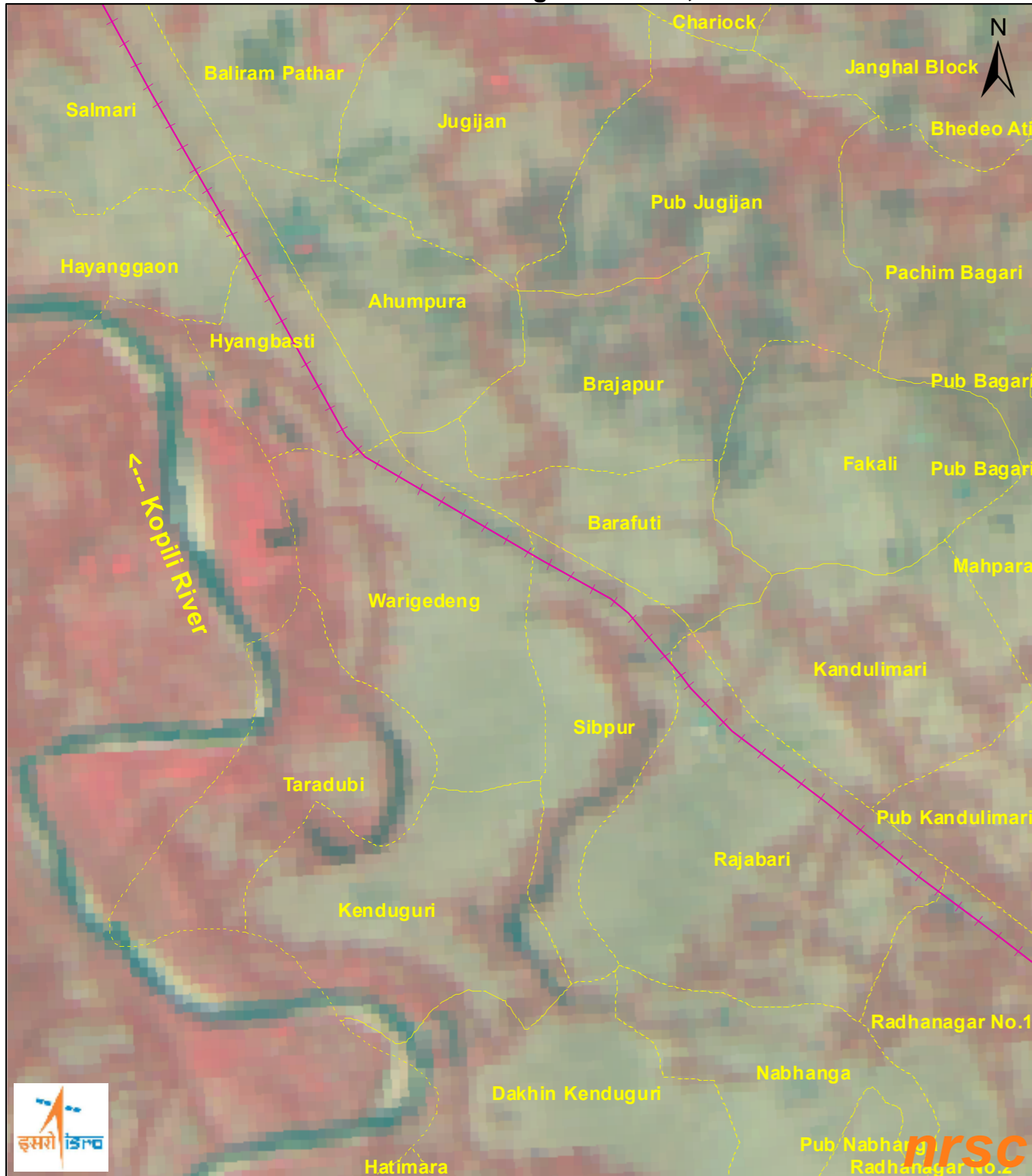
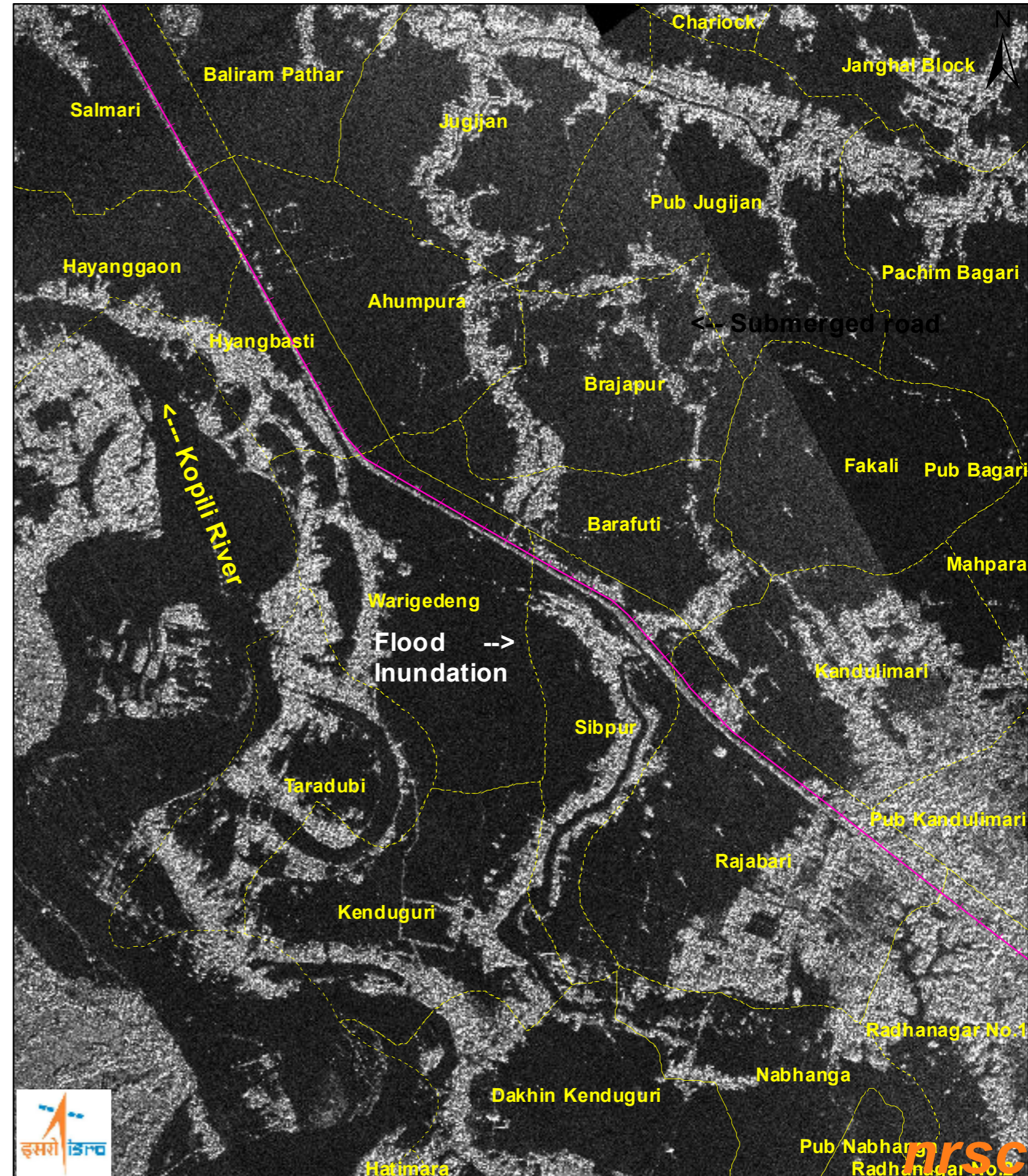


Flood Inundation in Part of Hojai District, Assam State



Pre-Flood Resourcesat-2 AWiFS Image of Mar 02, 2022

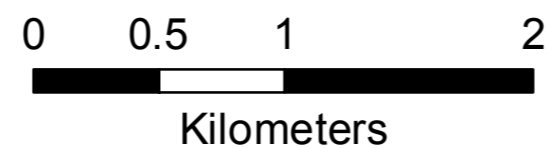
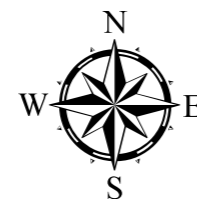


During Flood IRS SAR Image of May 20, 2022



Legend

-  Railway
-  Village Boundary



RRES
National Remote Sensing Centre, ISRO
Dept. of Space, Govt. of India
Hyderabad- 500 037
E-Mail: flood@nrsc.gov.in
www.nrsc.gov.in

Location Map

