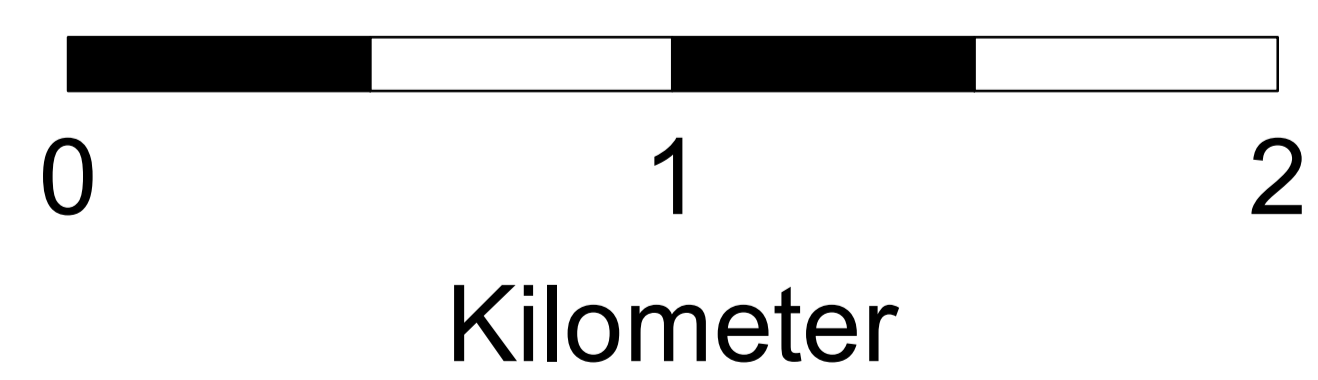
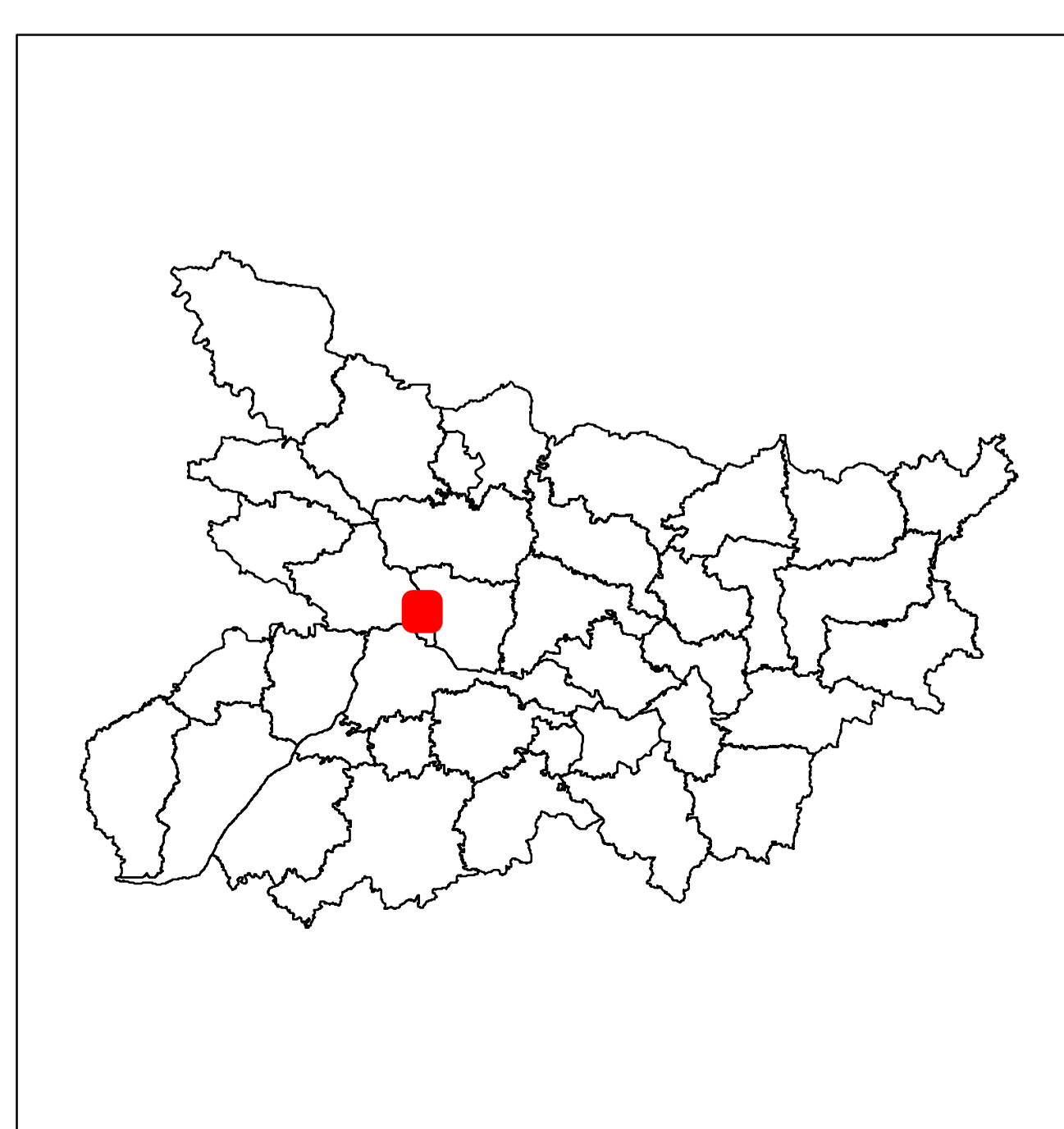
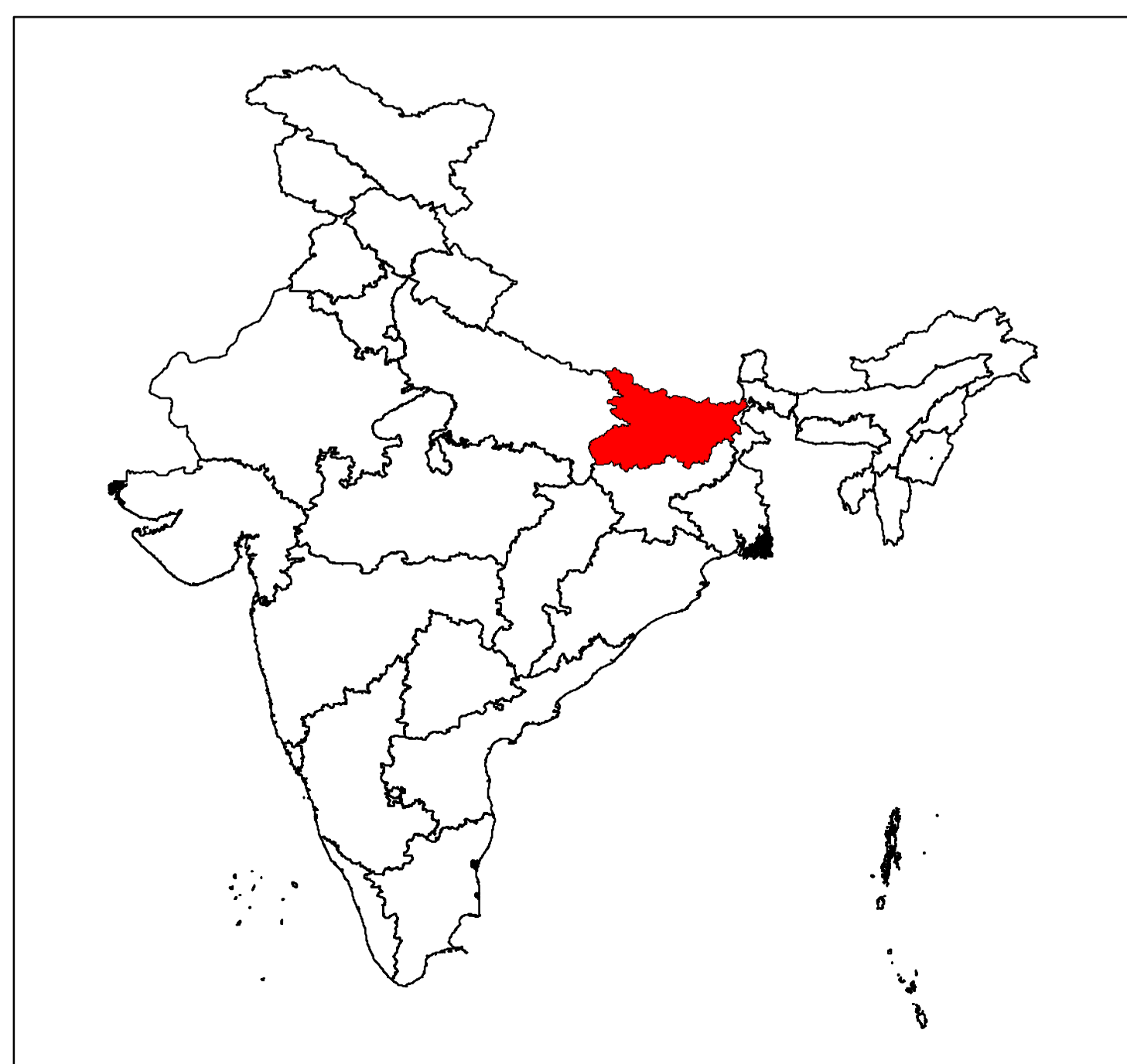
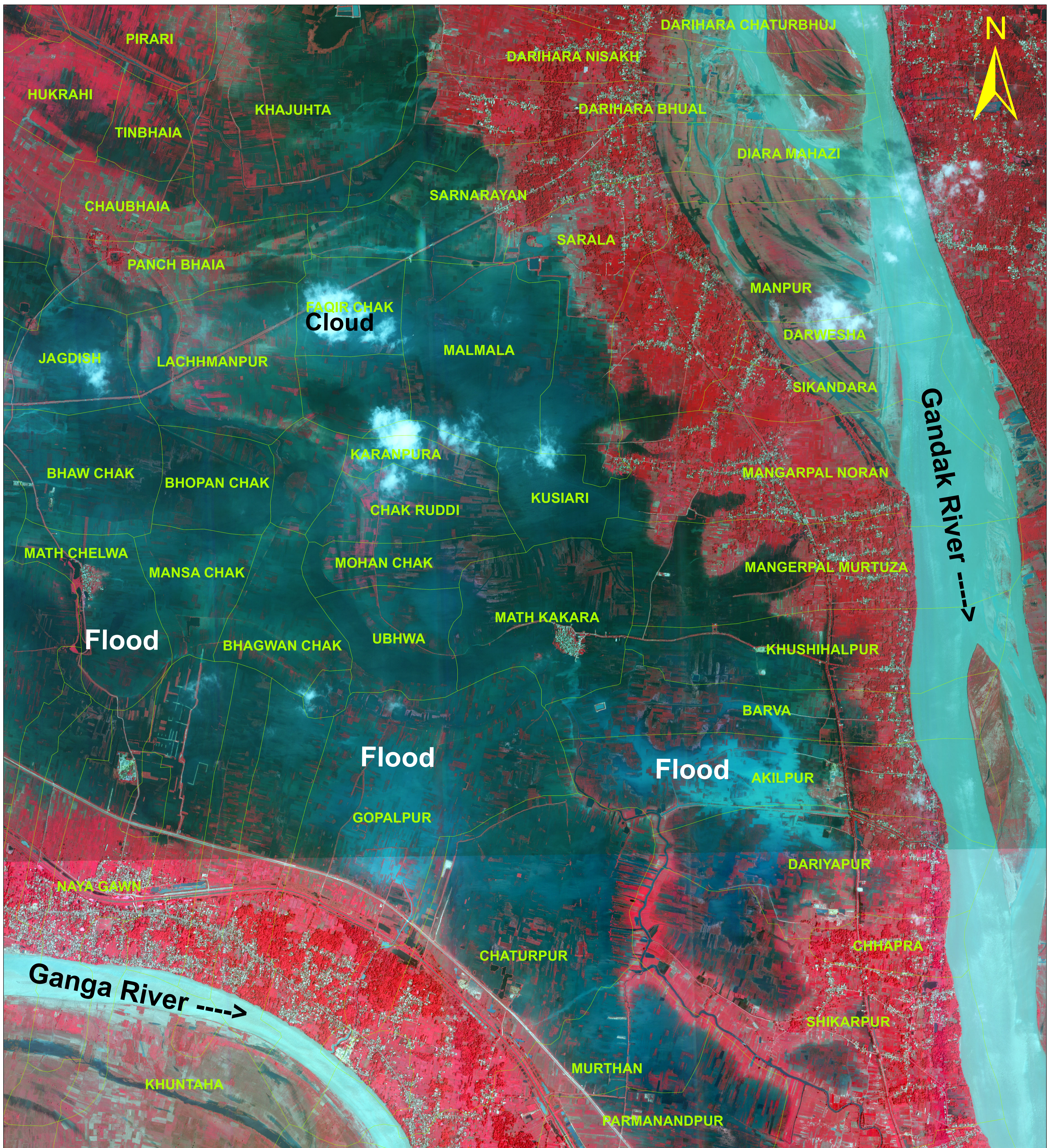


Cartosat 2E Satellite Image Showing Flood Inundation in Part of SARAN District, Bihar State as on 10 September, 2022



Legend

- Village Boundary
- Flood Inundation

RRES
 National Remote Sensing Centre, ISRO
 Dept. of Space, Govt. of India
 Hyderabad- 500 037
 E-Mail: flood@nrsc.gov.in
www.nrsc.gov.in