

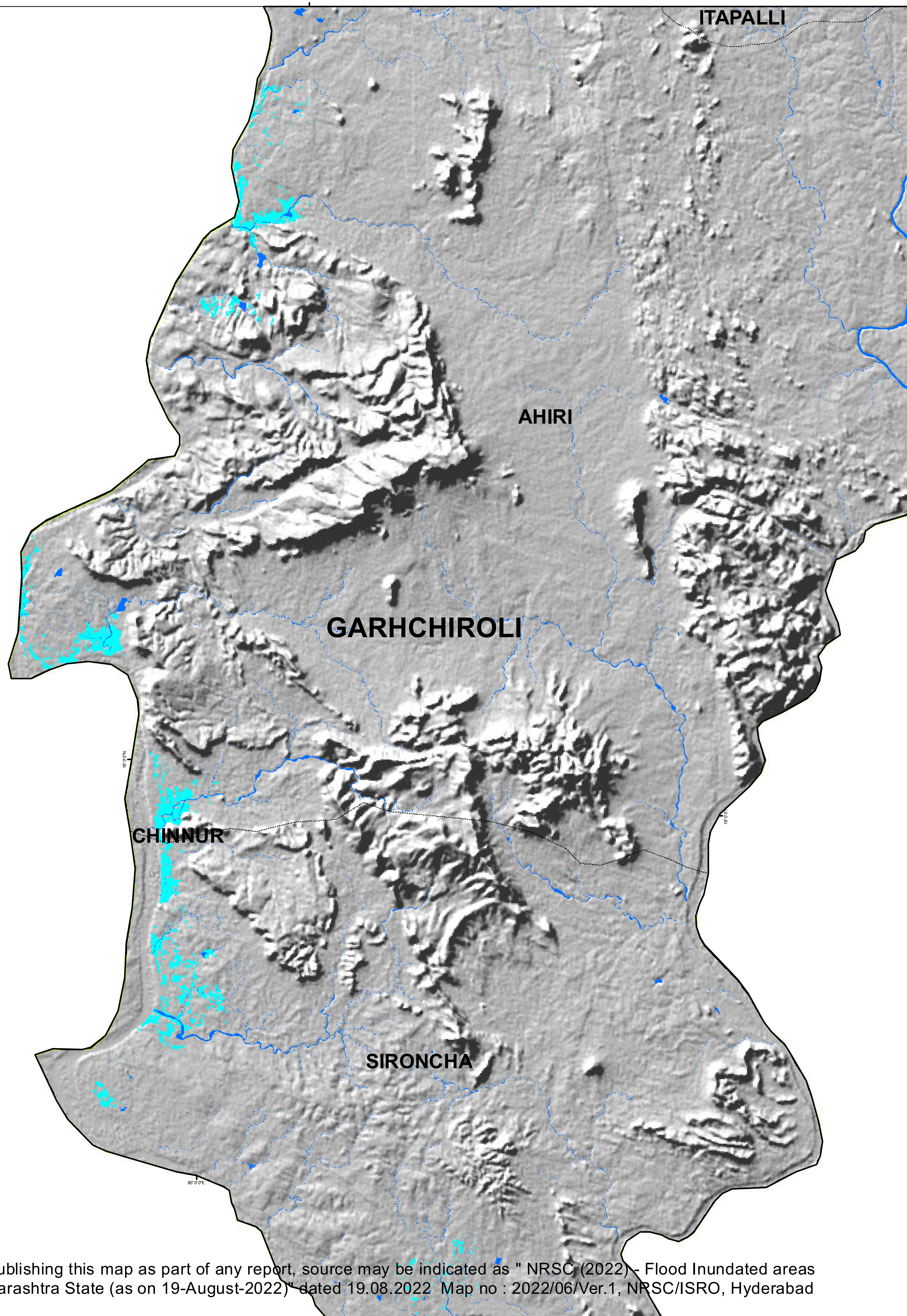
Flood Inundated areas in Part of Maharashtra State

Based on the analysis of Sentinel-1A Image of 19-Aug-2022 (0600 Hrs)

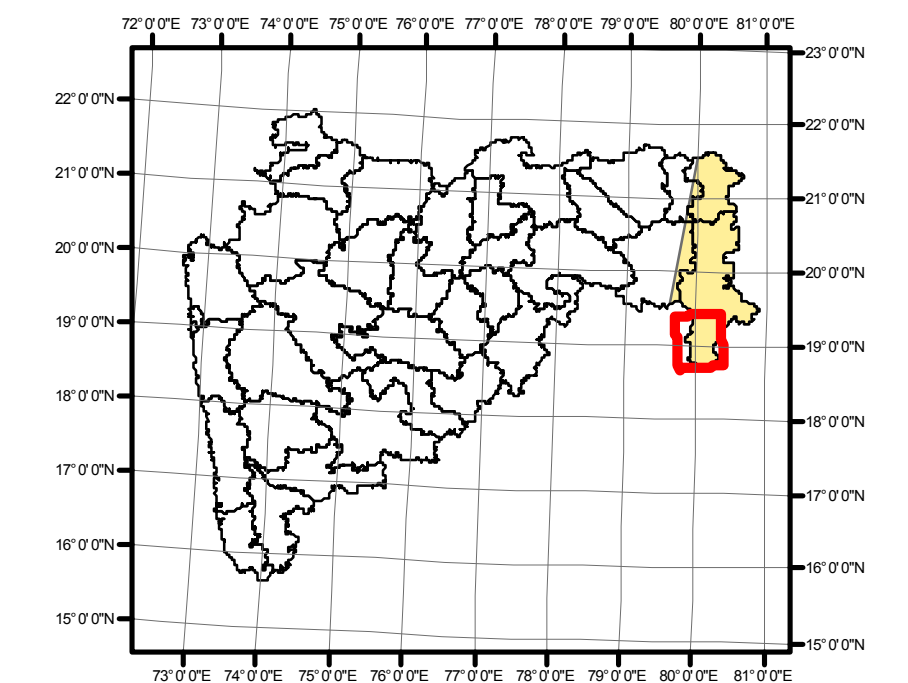
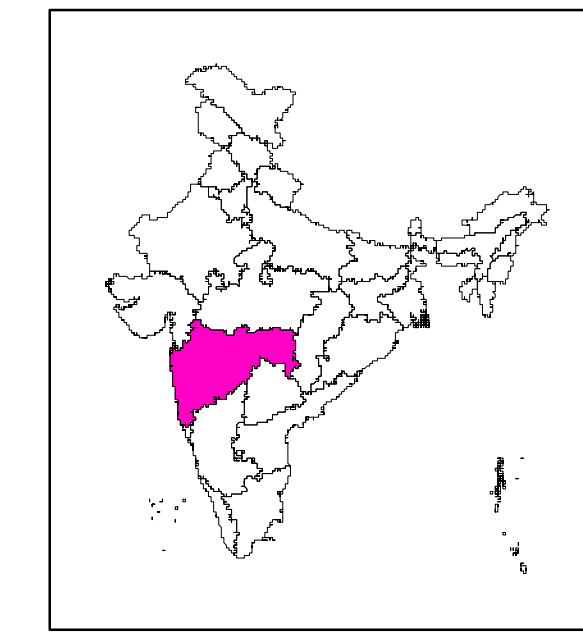
For official use

FLOOD EVENT ID: 08-FLD-2022-MH
MAP ID: 2022/06/Ver.1

Date of Issue :19.08.2022



Location Map



About the Event

Incessant rains lashed Maharashtra during second week of August. Areas around the River Wainganga and River Wardha were reported to be flooded in Bhandra and Chandrapur Districts respectively.

(Source: News Media, CWC)

Satellite Observations

This map highlights the flood inundation in Garhchiroli district of Maharashtra as on 19 August, 2022.

Satellite data used

Pre Flood:
Satellite: Resourcesat-2
Sensor: AWiFS
Date of Pass: 22-January-2022

Post Flood:
Satellite: Sentinel-1A
Sensor: AWiFS
Date of Pass: 19-Aug-2022

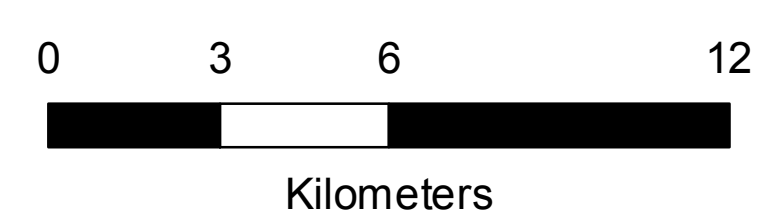
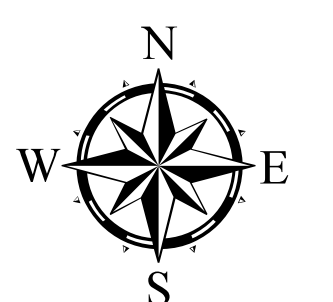
Other data used

NRC Landuse/Landcover Data of 2018-19

Background Data:Shaded Relief

Legend

- Railway Network
- Taluk Boundary
- District Boundary
- State Boundary
- River/Water Bodies
- Flood Inundation
- Area covered by Satellite



This product is prepared on rapid mapping mode for immediate use and sharing amongst official agencies. This provides preliminary results.

Flood inundation may include rain water accumulation / flood water in low lying areas.

Districts with inundation less than 100 ha are not included in the statistics.

All geographic information has limitations due to the scale, resolution, date and interpretation of the original source materials.

No ground verification is done.

Note: When publishing this map as part of any report, source may be indicated as " NRSC (2022) - Flood Inundated areas in Part of Maharashtra State (as on 19-August-2022)" dated 19.08.2022 Map no : 2022/06/Ver.1, NRSC/ISRO, Hyderabad

RRES
National Remote Sensing Centre, ISRO
Dept. of Space, Govt. of India
Hyderabad- 500 037
E-Mail: flood@nrsc.gov.in
www.nrsc.gov.in



nrsc