

RISAT-1A (EOS-4)

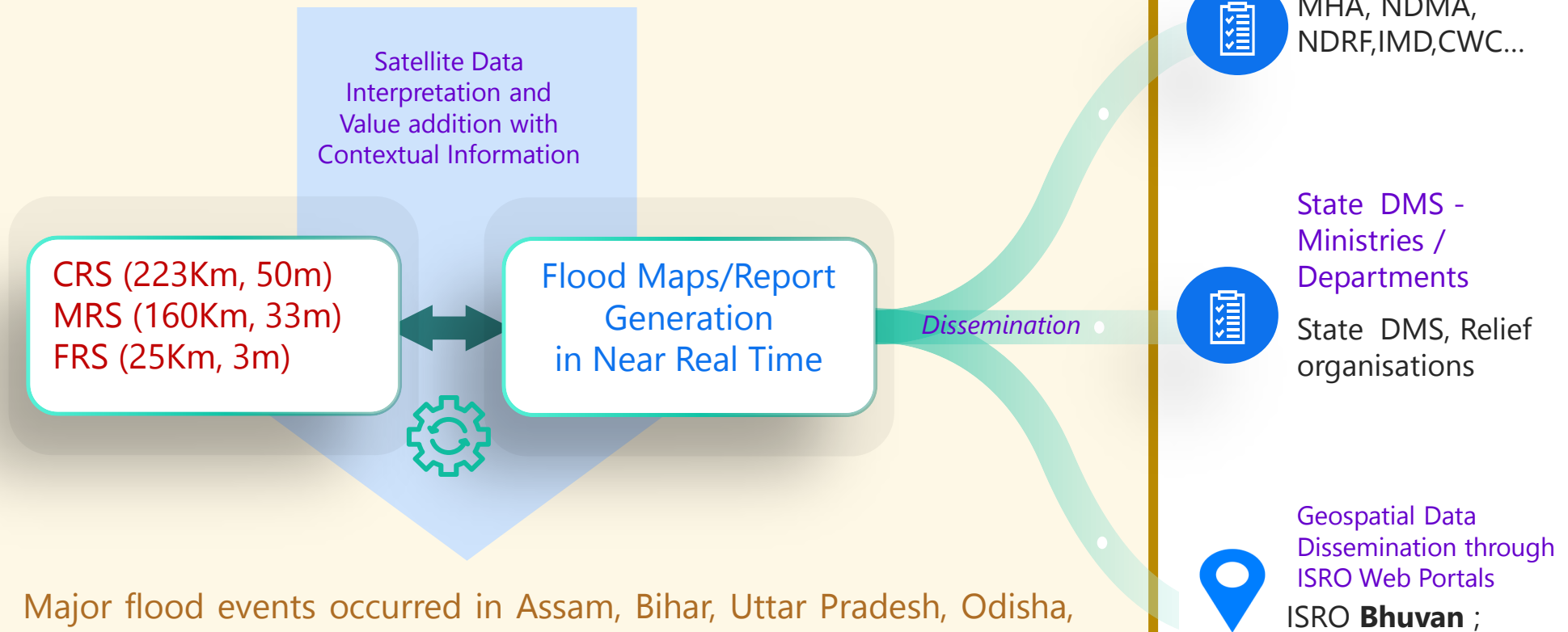
Utilisation for Flood Mapping & Monitoring -2022

Flood Mapping & Risk Assessment Division
Disaster Management Support Group
Remote Sensing Applications Area (RSAA)
National Remote Sensing Centre (NRSC)
Indian Space Research Organisation (ISRO)
Dept. of Space, Govt. of India
Balanagar, Hyderabad-37, Telangana, India.



RISAT 1A Launched in Feb, 2022

All weather satellite is extensively utilized for Near Real Time Flood Mapping



Major flood events occurred in Assam, Bihar, Uttar Pradesh, Odisha, Andhra Pradesh, Telangana States. **During 2022, 67 CRS, 177 MRS** Datasets from **RISAT1A** were utilized covering **14 States** in India for **Near real time flood mapping**. Apart from these, **300 RISAT-A MRS** Data is used for pre-flood scenario generation over India.

Datasets Used

51
Assam

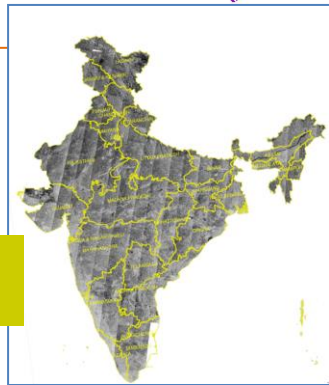
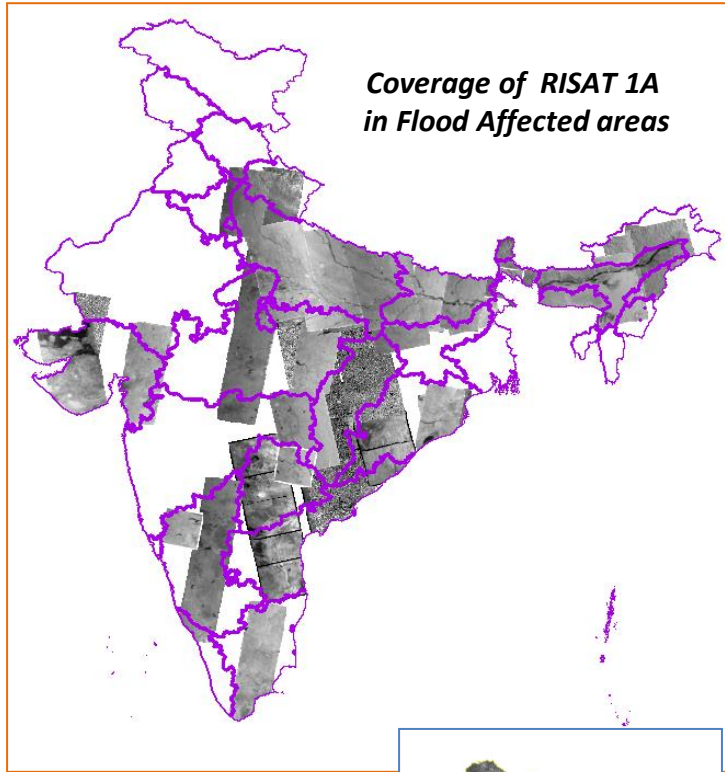
67
Uttar Pradesh

53
Bihar

34
AP & Telangana

20
MP

11
Odisha



300 for Generation of Pre flood Scenario

Date : Map Generated

May 2022

S	M	T	W	T	F	S
1	2	3	4	5	6	7
8	9	10	11	12	13	14
15	16	17	18	19	20	21
22	23	24	25	26	27	28
29	30	31				

Jun 2022

S	M	T	W	T	F	S
			1	2	3	4
5	6	7	8	9	10	11
12	13	14	15	16	17	18
19	20	21	22	23	24	25
26	27	28	29	30		

Jul 2022

S	M	T	W	T	F	S
					1	2
3	4	5	6	7	8	9
10	11	12	13	14	15	16
17	18	19	20	21	22	23
24	25	26	27	28	29	30
31						

Aug 2022

S	M	T	W	T	F	S
	1	2	3	4	5	6
7	8	9	10	11	12	13
14	15	16	17	18	19	20
21	22	23	24	25	26	27
28	29	30	31			

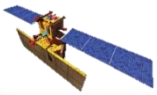
Sep 2022

S	M	T	W	T	F	S
				1	2	3
4	5	6	7	8	9	10
11	12	13	14	15	16	17
18	19	20	21	22	23	24
25	26	27	28	29	30	

Oct 2022

S	M	T	W	T	F	S
						1
2	3	4	5	6	7	8
9	10	11	12	13	14	15
16	17	18	19	20	21	22
23	24	25	26	27	28	29
30	31					



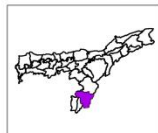


RISAT-1A (EOS-4) Satellite Image as on 19th May, 2022

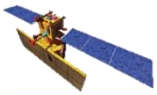
Part of Cachar District, Assam State



RISAT-1A FRS



Rapid Response Emergency Services (RRES)
National Remote Sensing Centre, ISRO
Dept. of Space, Govt. of India
Hyderabad- 500 037
E-Mail: flood@nrsc.gov.in
www.nrsc.gov.in

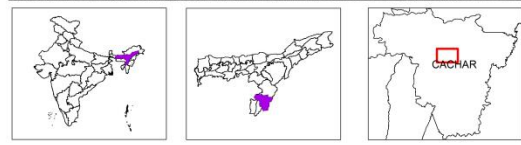


RISAT-1A (EOS-4) Satellite Image as on 19th May, 2022

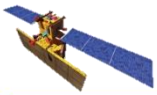
Part of Cachar District, Assam State



RISAT-1A FRS

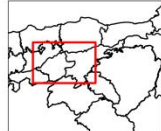
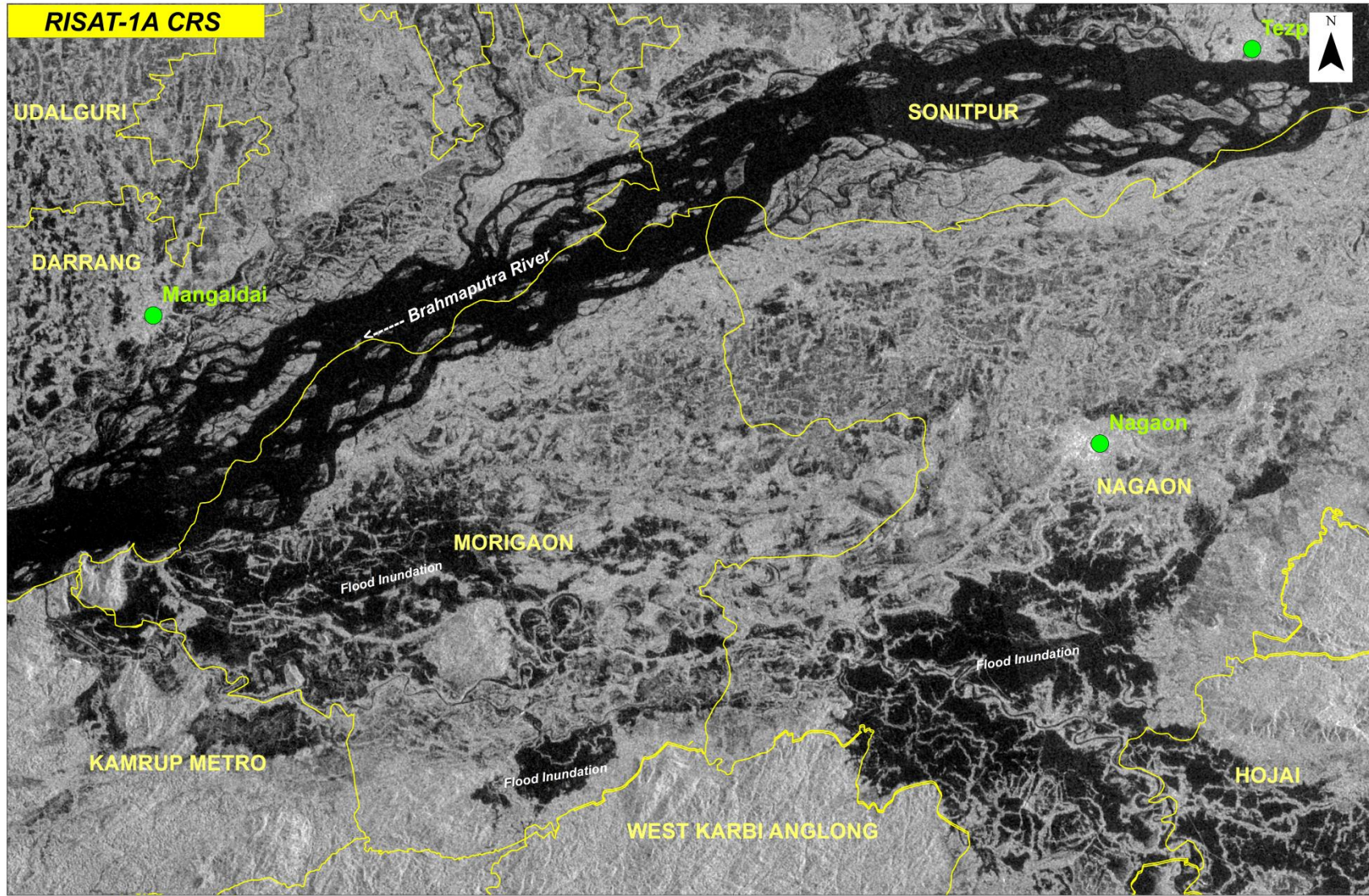


Rapid Response Emergency Services (RRES)
National Remote Sensing Centre, ISRO
Dept. of Space, Govt. of India
Hyderabad- 500 037
E-Mail: flood@nrsc.gov.in
www.nrsc.gov.in



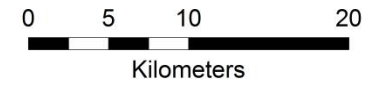
RISAT-1A (EOS-4) Satellite Image as on 20th Jun, 2022

Part of Brahmaputra River, Assam State

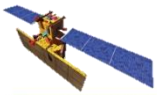


District Boundary

Town

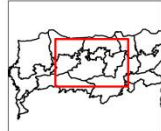
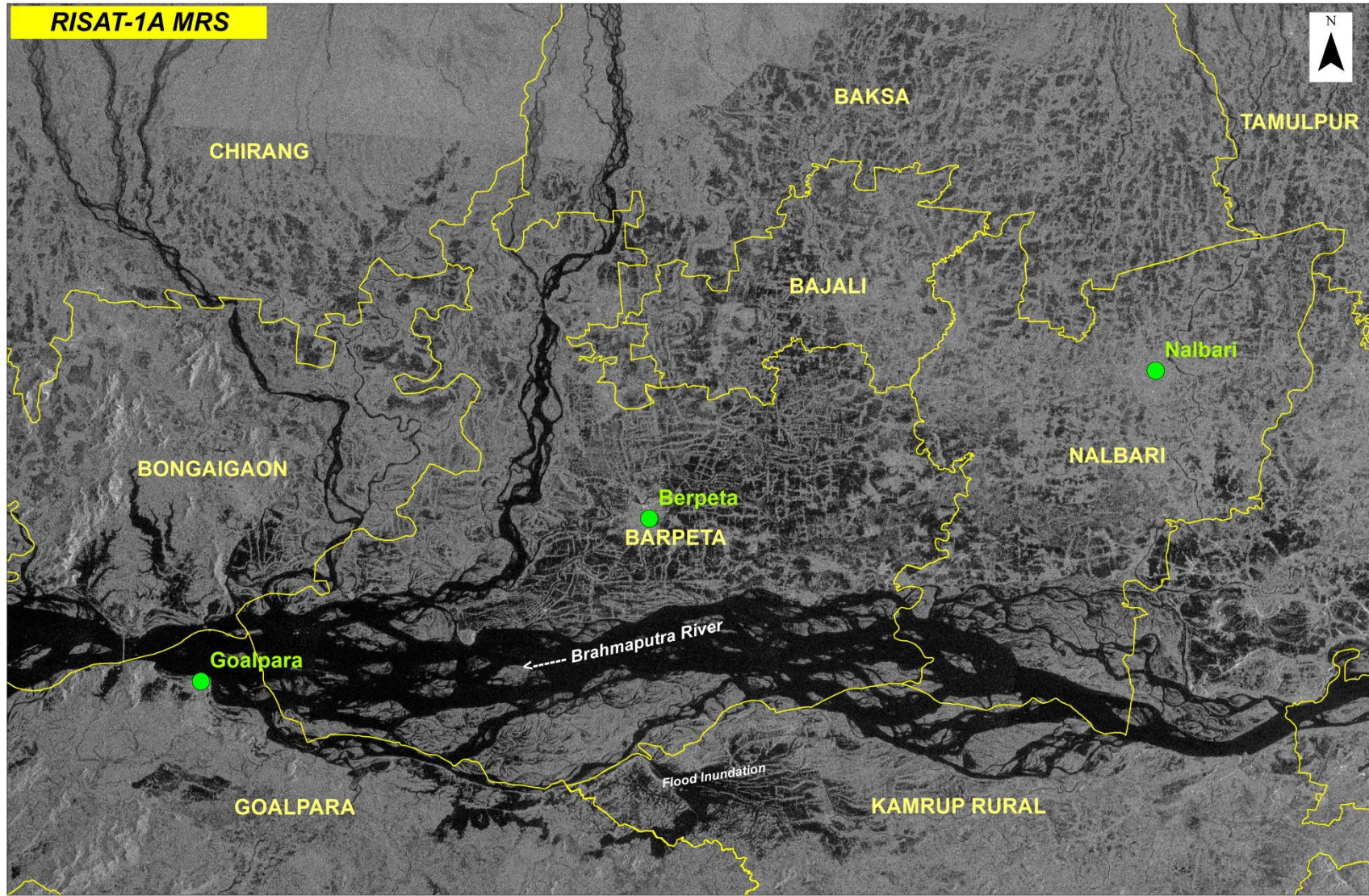




Rapid Response Emergency Services (RRES)
 National Remote Sensing Centre, ISRO
 Dept. of Space, Govt. of India
 Hyderabad- 500 037
 E-Mail: flood@nrsc.gov.in
www.nrsc.gov.in

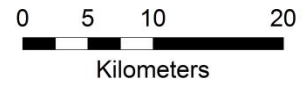


RISAT-1A (EOS-4) Satellite Image as on 2nd Jul, 2022

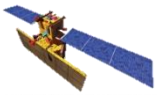
Parts of Brahmaputra River, Assam State



-  District Boundary
-  Town

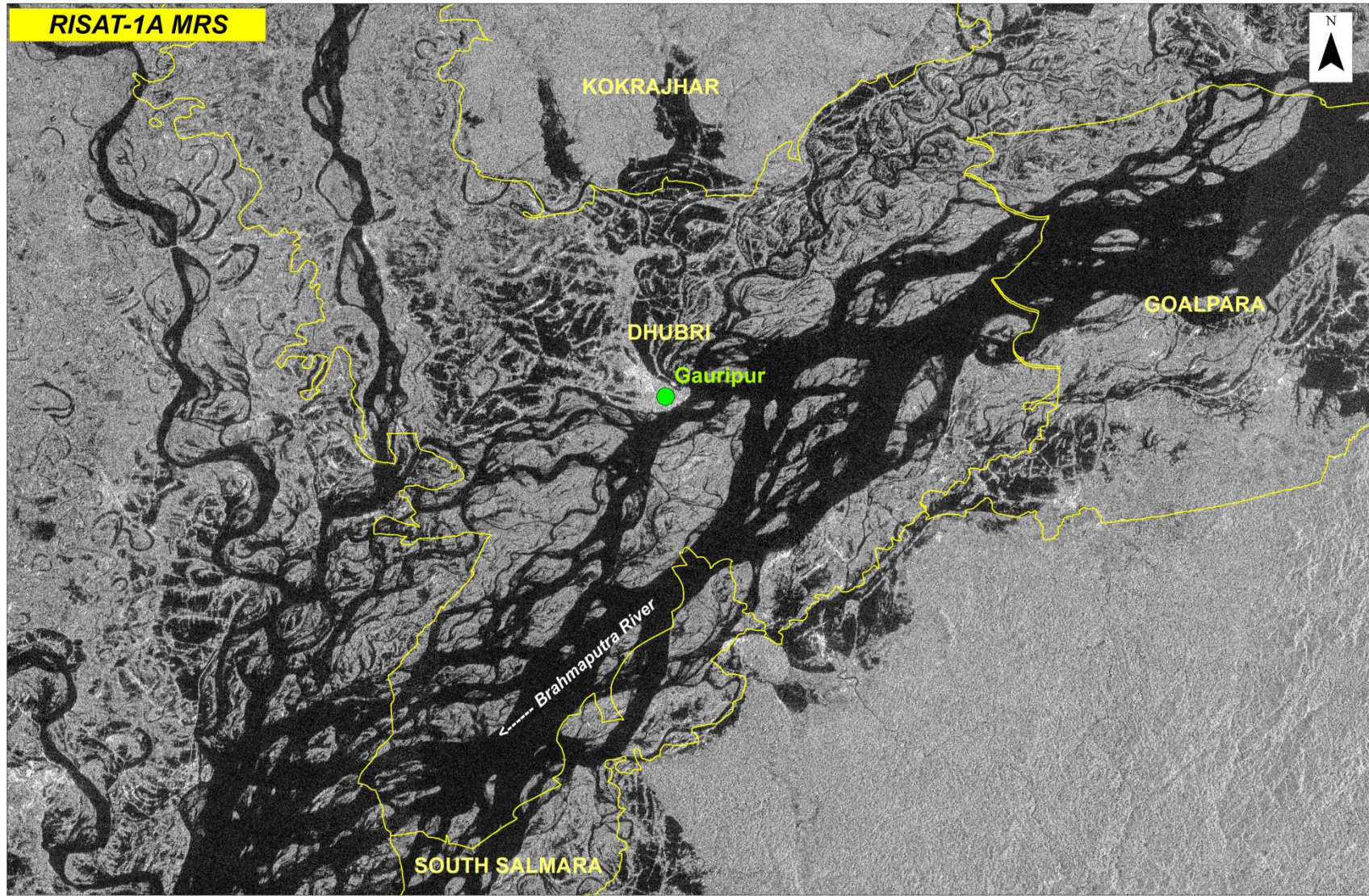


Rapid Response Emergency Services (RRES)
 National Remote Sensing Centre, ISRO
 Dept. of Space, Govt. of India
 Hyderabad- 500 037
 E-Mail: flood@nrsc.gov.in
www.nrsc.gov.in



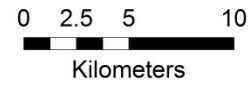
RISAT-1A (EOS-4) Satellite Image as on 24th Jun, 2022

Parts of Brahmaputra River, Assam State

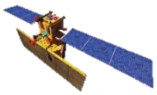


District Boundary

Town

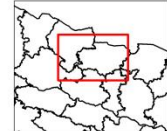
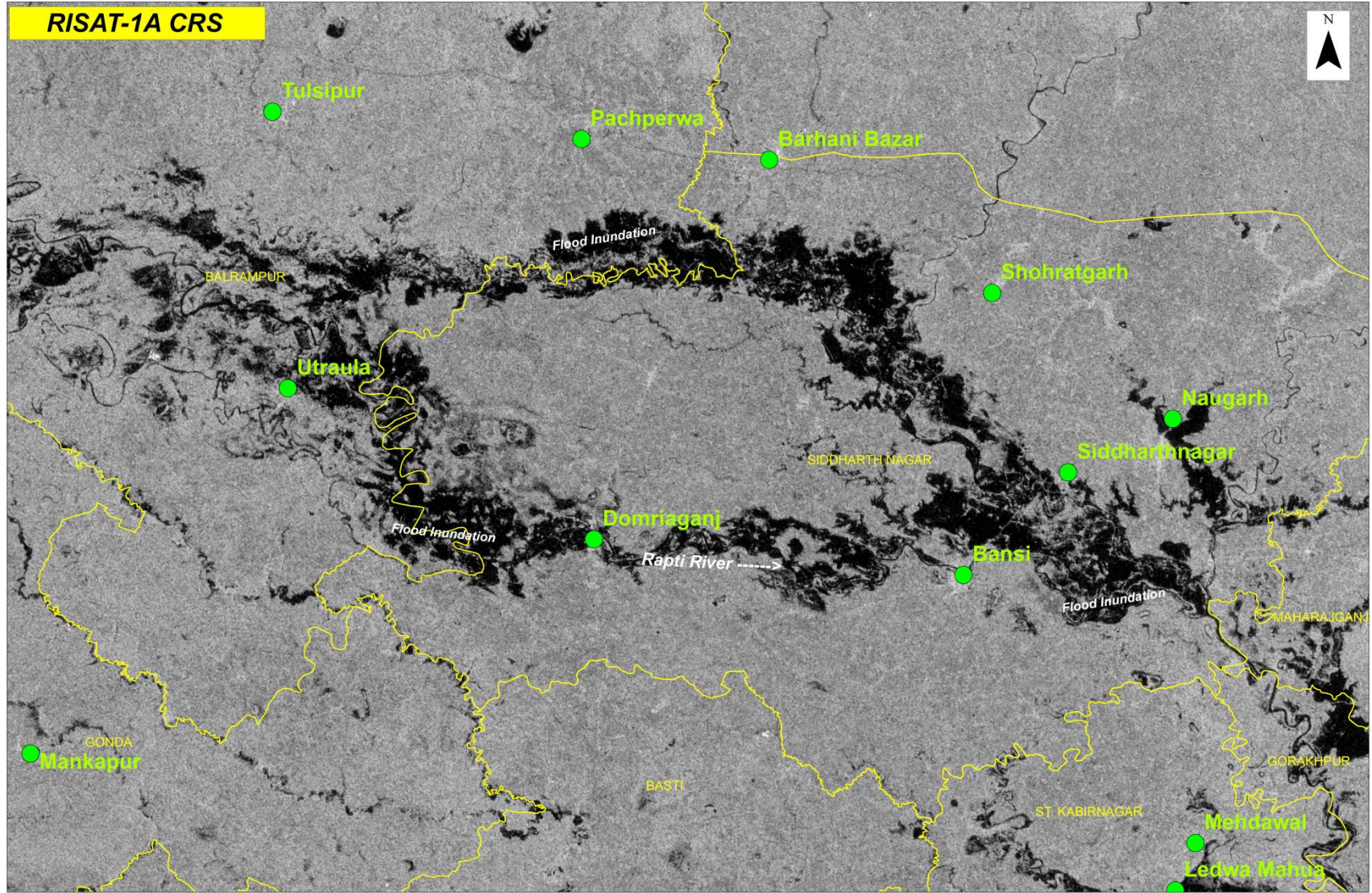


Rapid Response Emergency Services (RRES)
 National Remote Sensing Centre, ISRO
 Dept. of Space, Govt. of India
 Hyderabad- 500 037
 E-Mail: flood@nrsc.gov.in
www.nrsc.gov.in

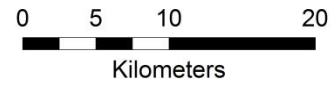


RISAT-1A (EOS-4) Satellite Image as on 14 Oct, 2022

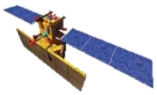
Part of Uttar Pradesh State



- District Boundary
- Town

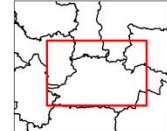
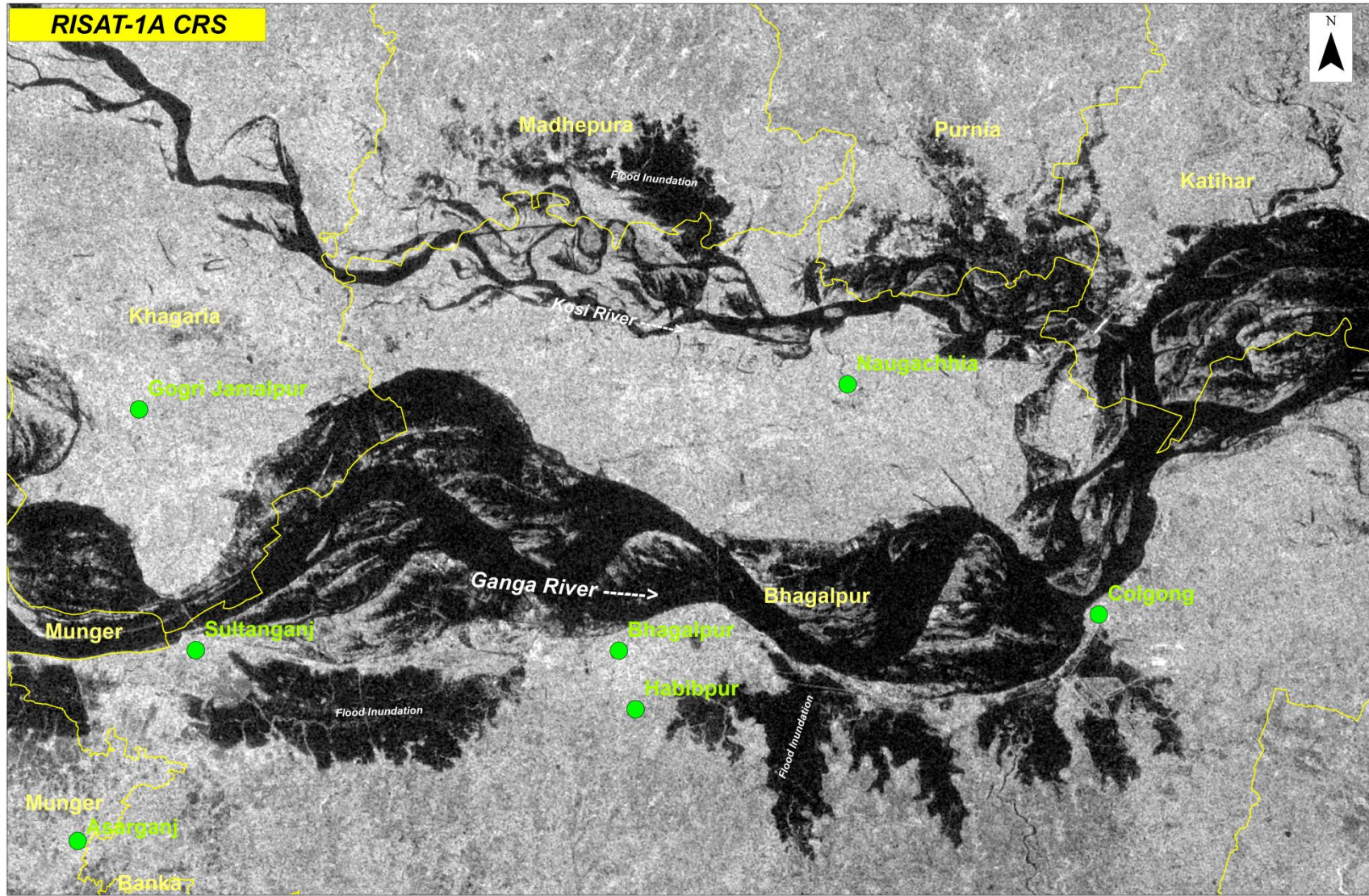


Rapid Response Emergency Services (RRES)
 National Remote Sensing Centre, ISRO
 Dept. of Space, Govt. of India
 Hyderabad- 500 037
 E-Mail: flood@nrsc.gov.in
www.nrsc.gov.in



RISAT-1A (EOS-4) Satellite Image as on 31 Aug, 2022

Part of Bihar State

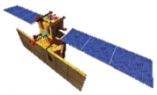


District Boundary

Town

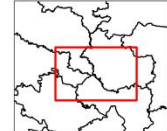
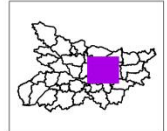
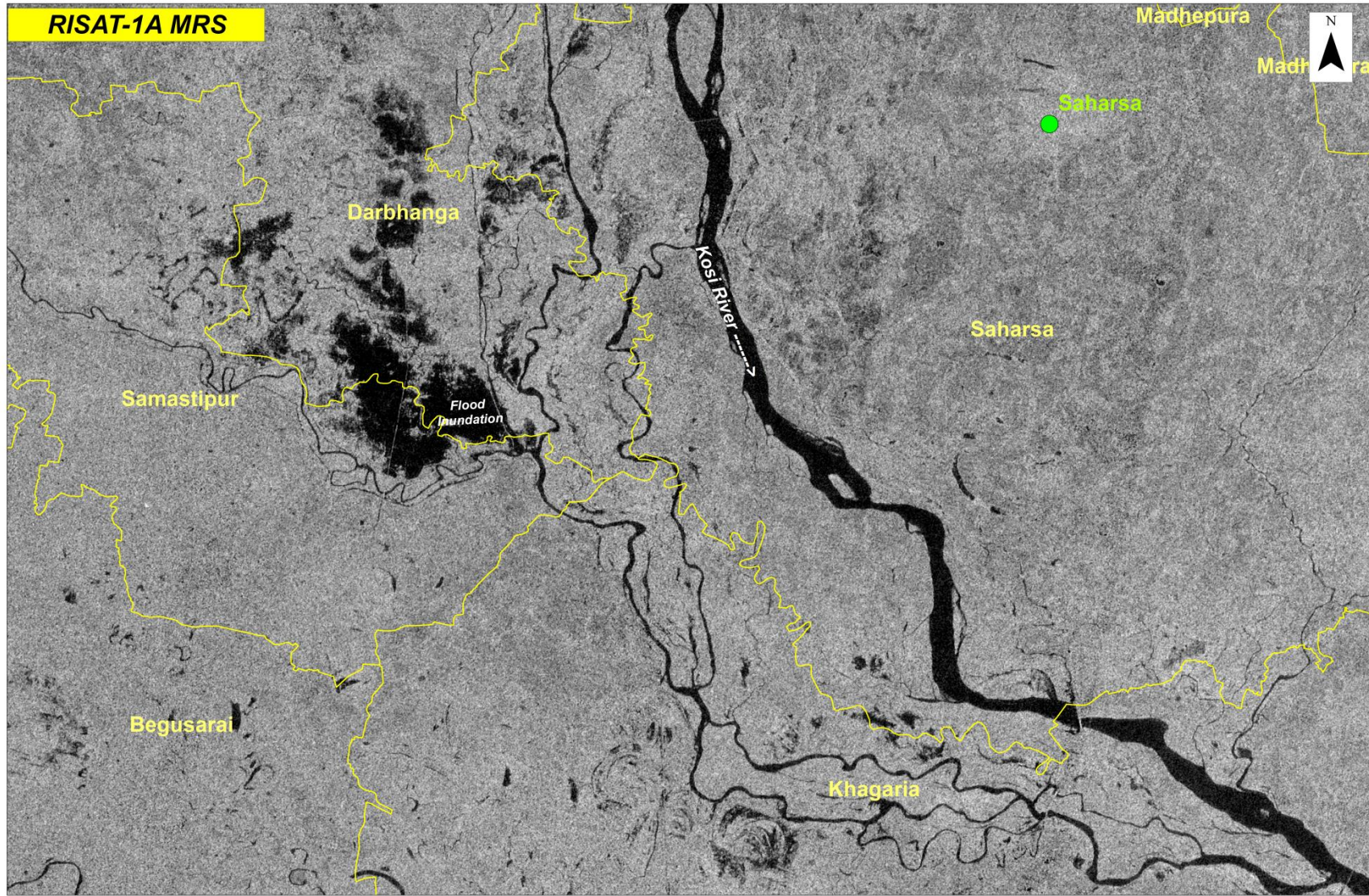


Rapid Response Emergency Services (RRES)
 National Remote Sensing Centre, ISRO
 Dept. of Space, Govt. of India
 Hyderabad- 500 037
 E-Mail: flood@nrsc.gov.in
www.nrsc.gov.in



RISAT-1A (EOS-4) Satellite Image as on 16 Sep, 2022

Part of Bihar State

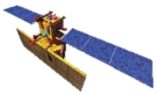


District Boundary

Town

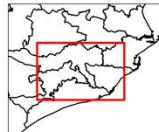
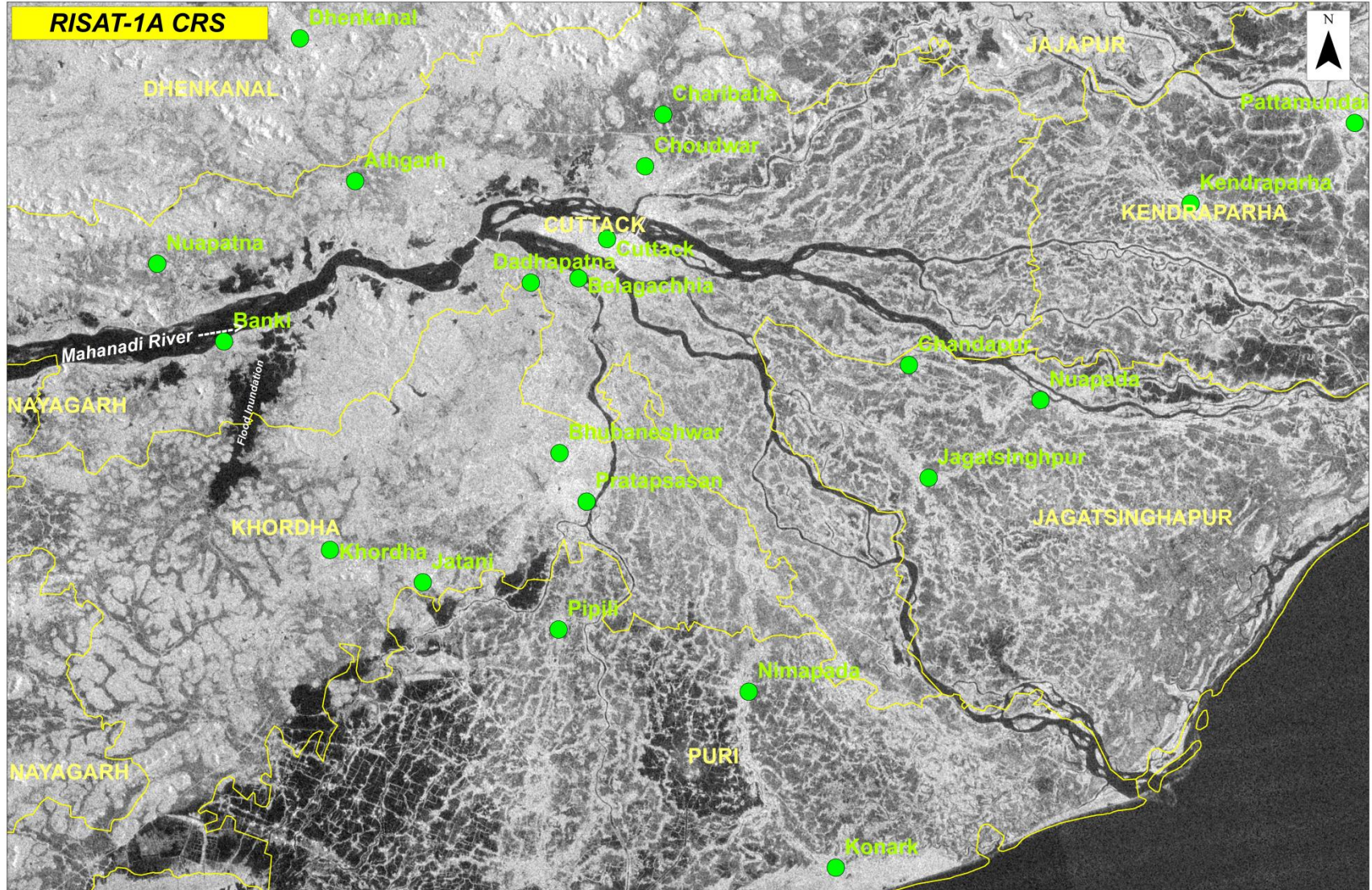




Rapid Response Emergency Services (RRES)
National Remote Sensing Centre, ISRO
Dept. of Space, Govt. of India
Hyderabad- 500 037
E-Mail: flood@nrsc.gov.in
www.nrsc.gov.in



RISAT-1A (EOS-4) Satellite Image as on 24 Aug, 2022

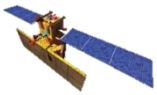
Part of Odisha State



 District Boundary
 Town



Rapid Response Emergency Services (RRES)
National Remote Sensing Centre, ISRO
Dept. of Space, Govt. of India
Hyderabad- 500 037
E-Mail: flood@nrsc.gov.in
www.nrsc.gov.in

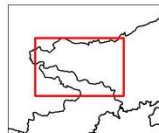
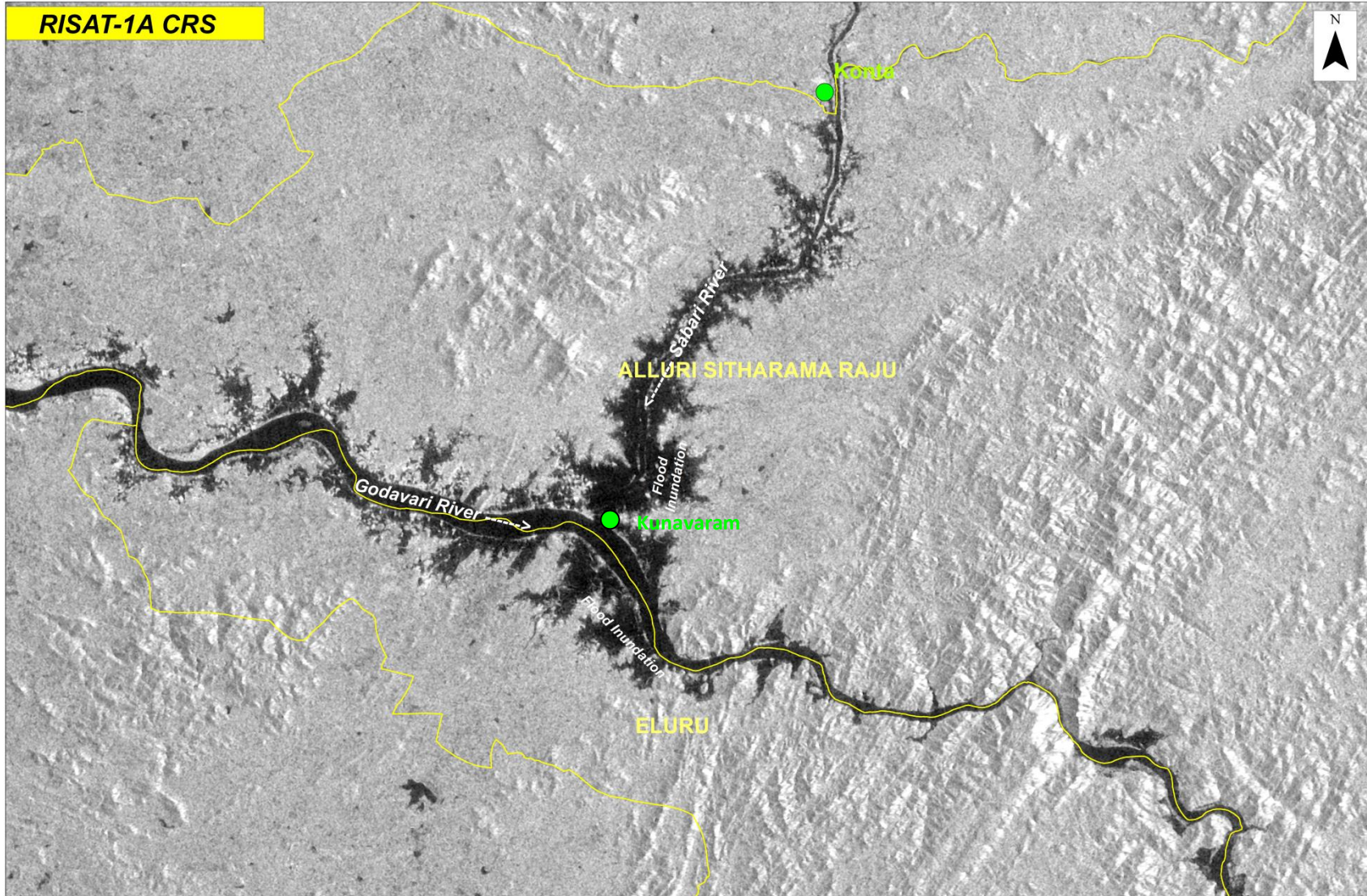




RISAT-1A (EOS-4) Satellite Image as on 19 Jul, 2022

Part of Andhra Pradesh State



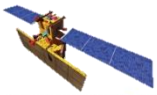
RISAT-1A CRS



 District Boundary
 Town

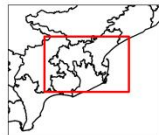
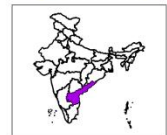
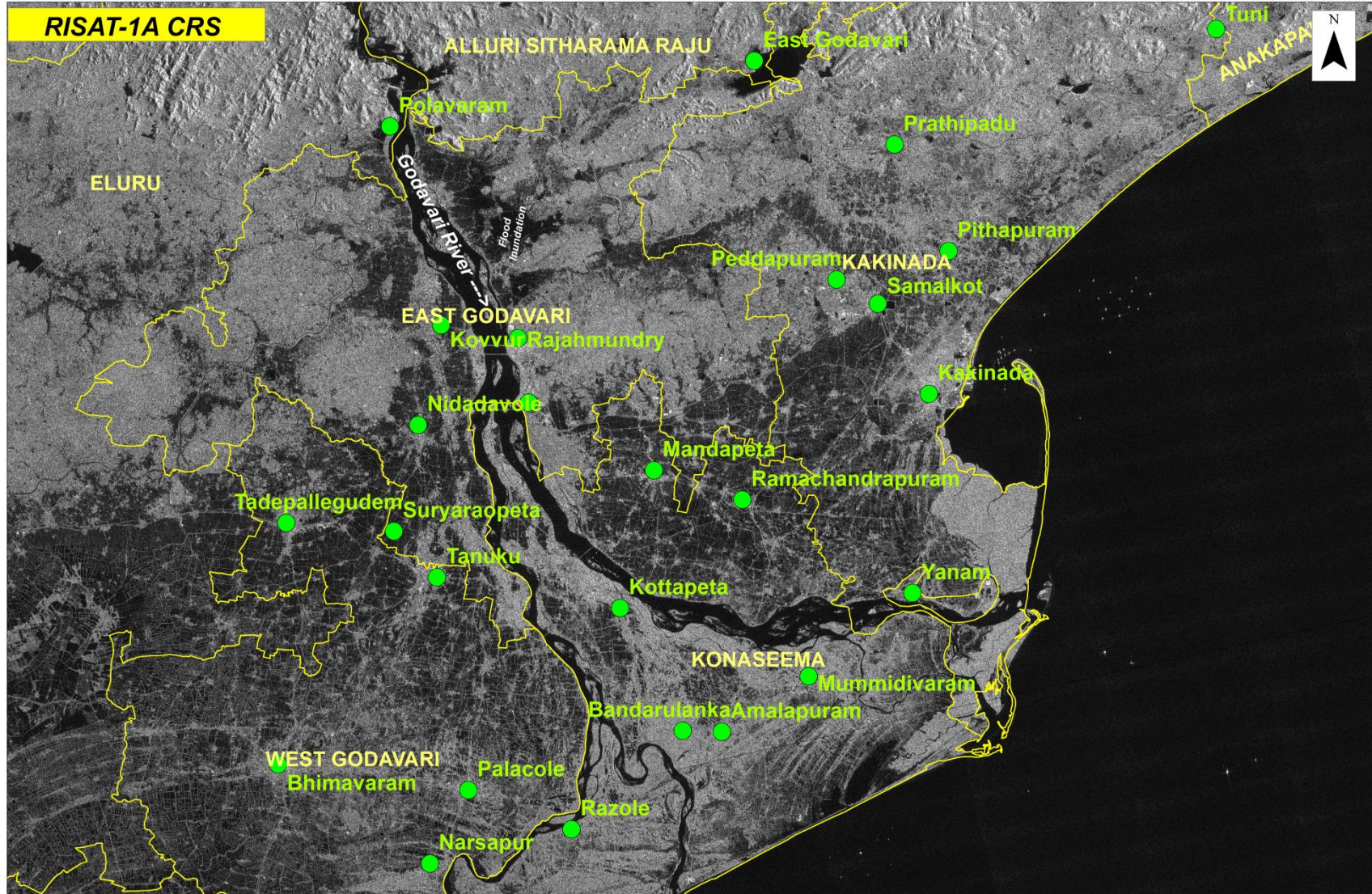


Rapid Response Emergency Services (RRES)
 National Remote Sensing Centre, ISRO
 Dept. of Space, Govt. of India
 Hyderabad- 500 037
 E-Mail: flood@nrsc.gov.in
www.nrsc.gov.in



RISAT-1A (EOS-4) Satellite Image as on 20 Jul, 2022

Coastal Part of Andhra Pradesh State



District Boundary
● Town



Rapid Response Emergency Services (RRES)
 National Remote Sensing Centre, ISRO
 Dept. of Space, Govt. of India
 Hyderabad- 500 037
 E-Mail: flood@nrsc.gov.in
www.nrsc.gov.in

RISAT-1A (EOS-4)

Extensively Utilised for Flood Mapping & Monitoring



RISAT-1A (FRS)