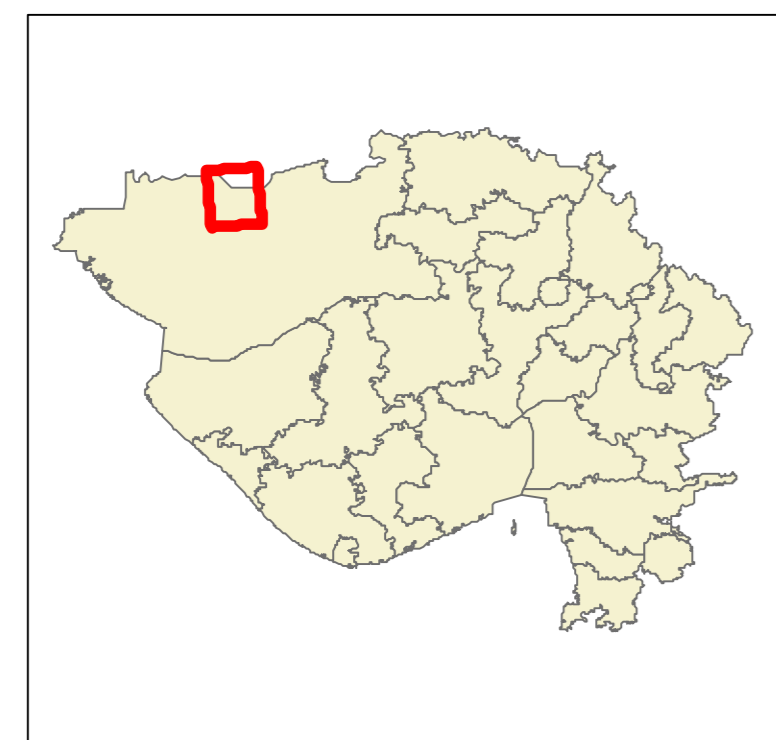
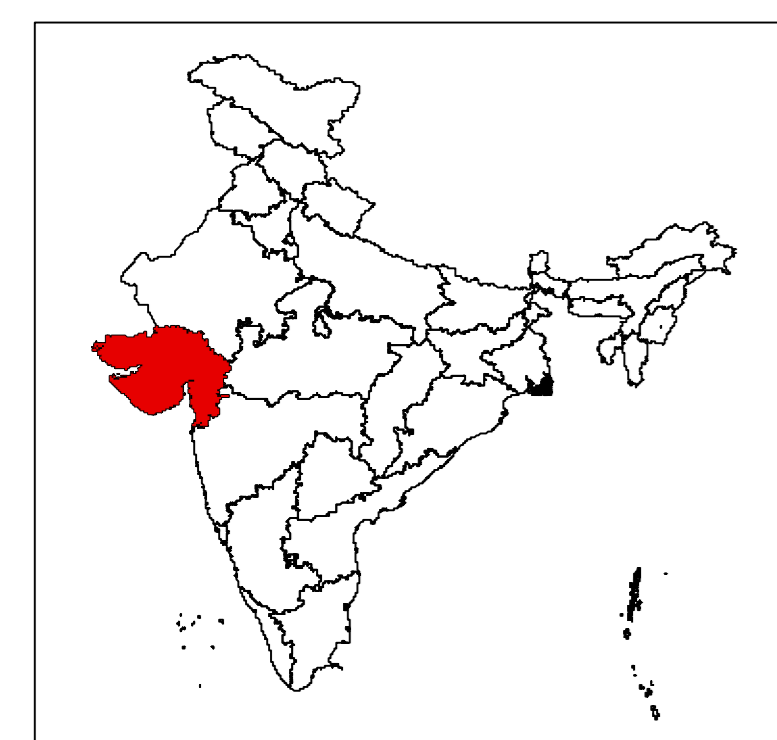
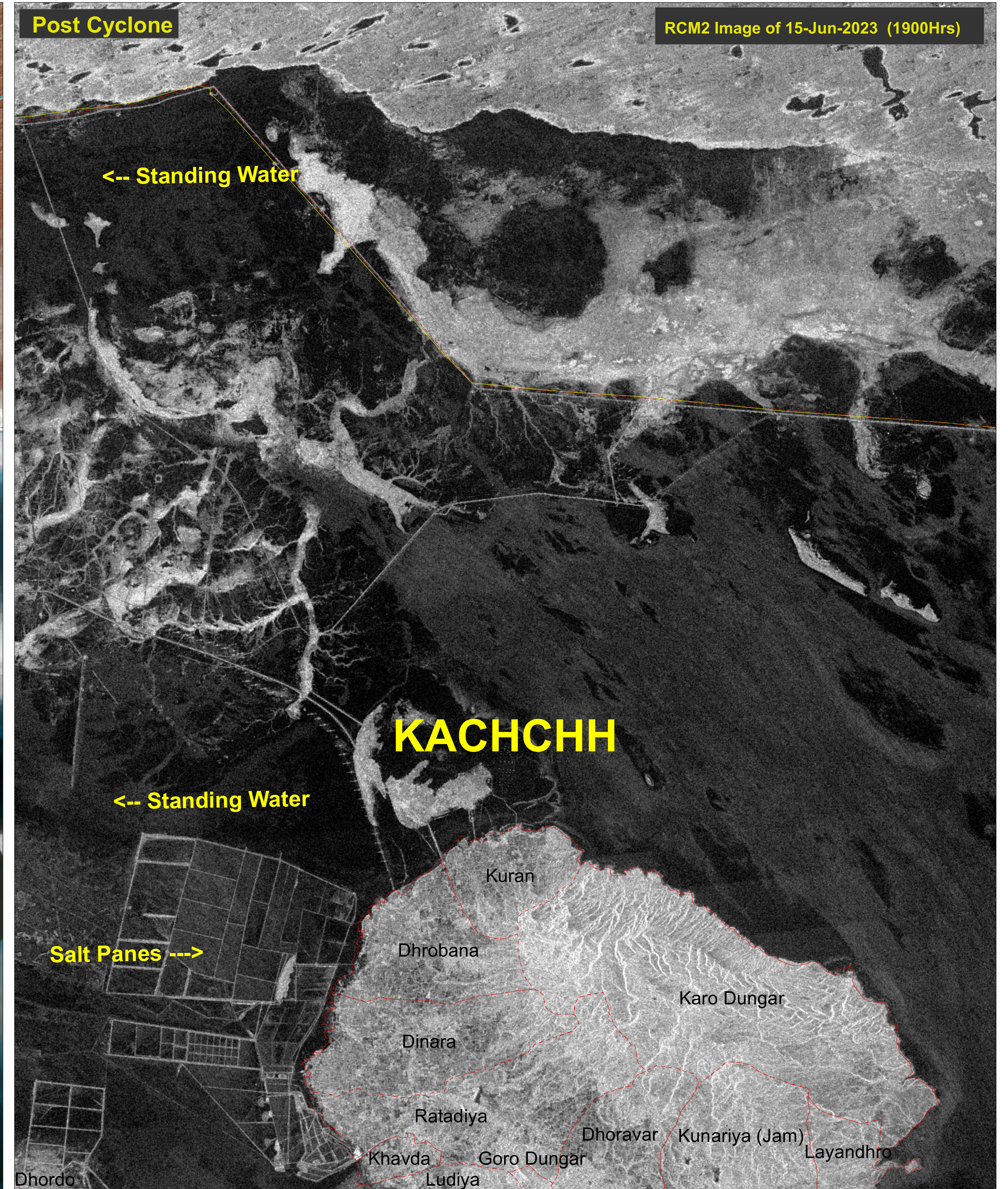
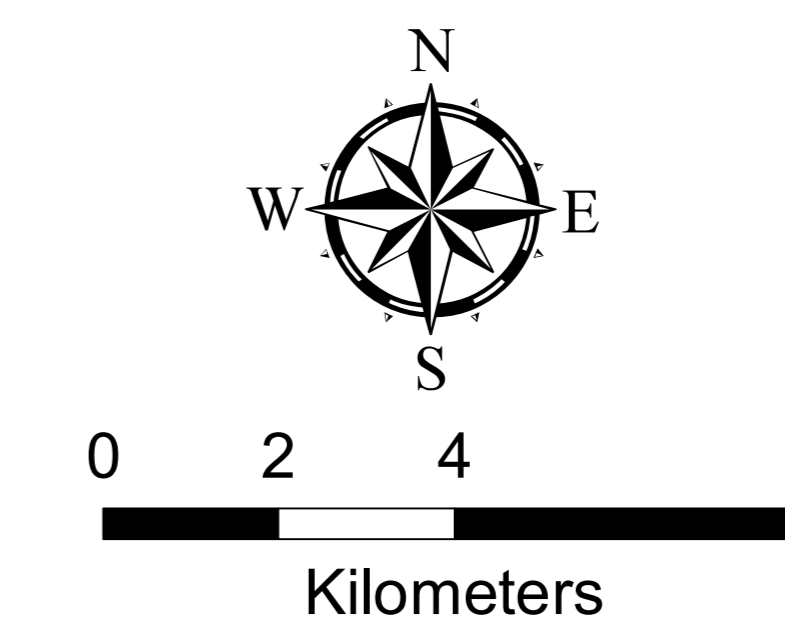


View of surroundings -Rann of Kachchh ,Kachchh District, Gujarat State (Standing water due to heavy rainfall during Biparjoy Cyclone)



Legend	
	District Boundary
	Village Boundary



RRES
National Remote Sensing Centre, ISRO
Dept. of Space, Govt. of India
Hyderabad- 500 037
E-Mail: flood@nrsc.gov.in
www.nrsc.gov.in

This map is prepared using RCM 2 satellite image received under International Charter, Call ID-948.