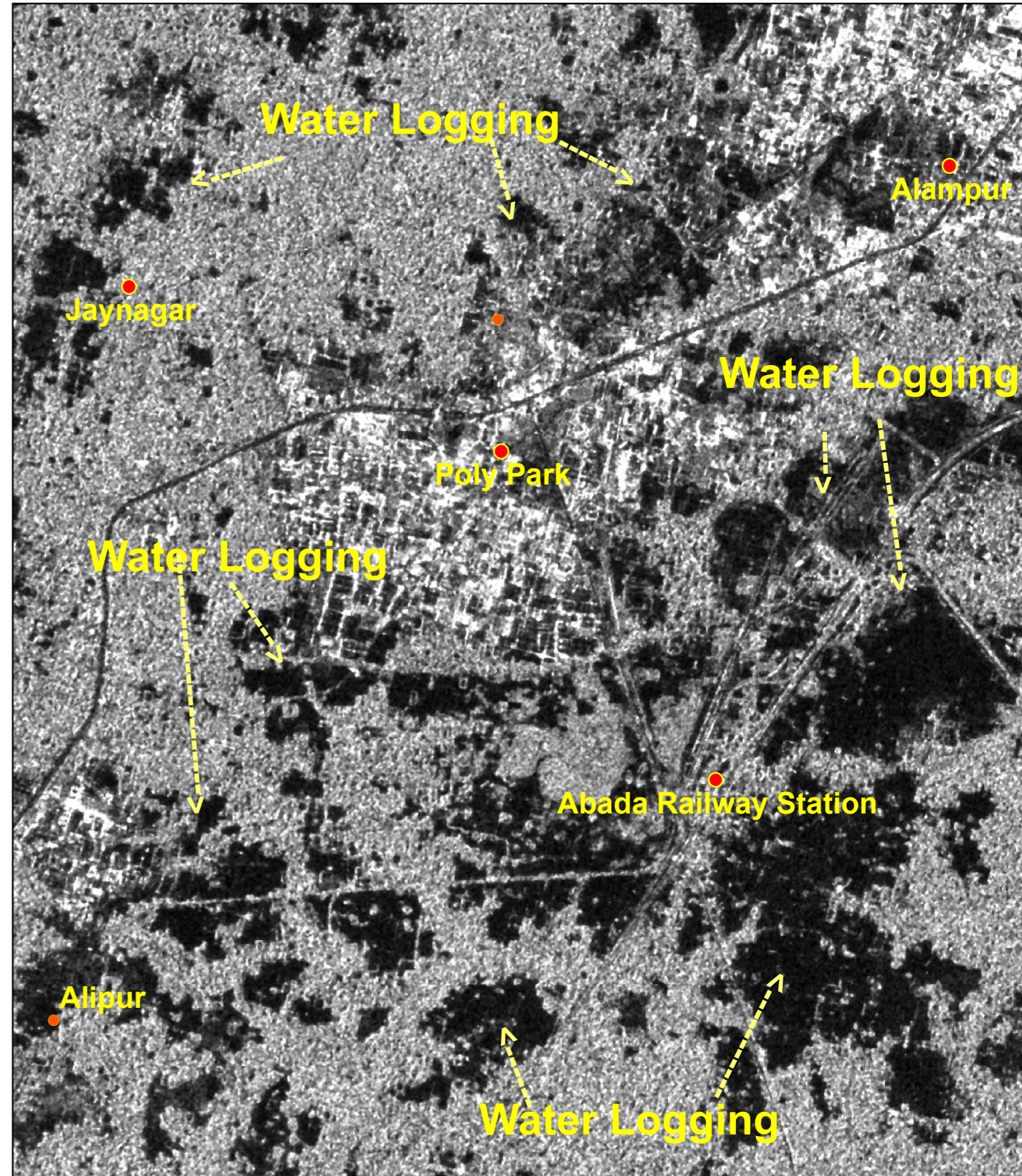
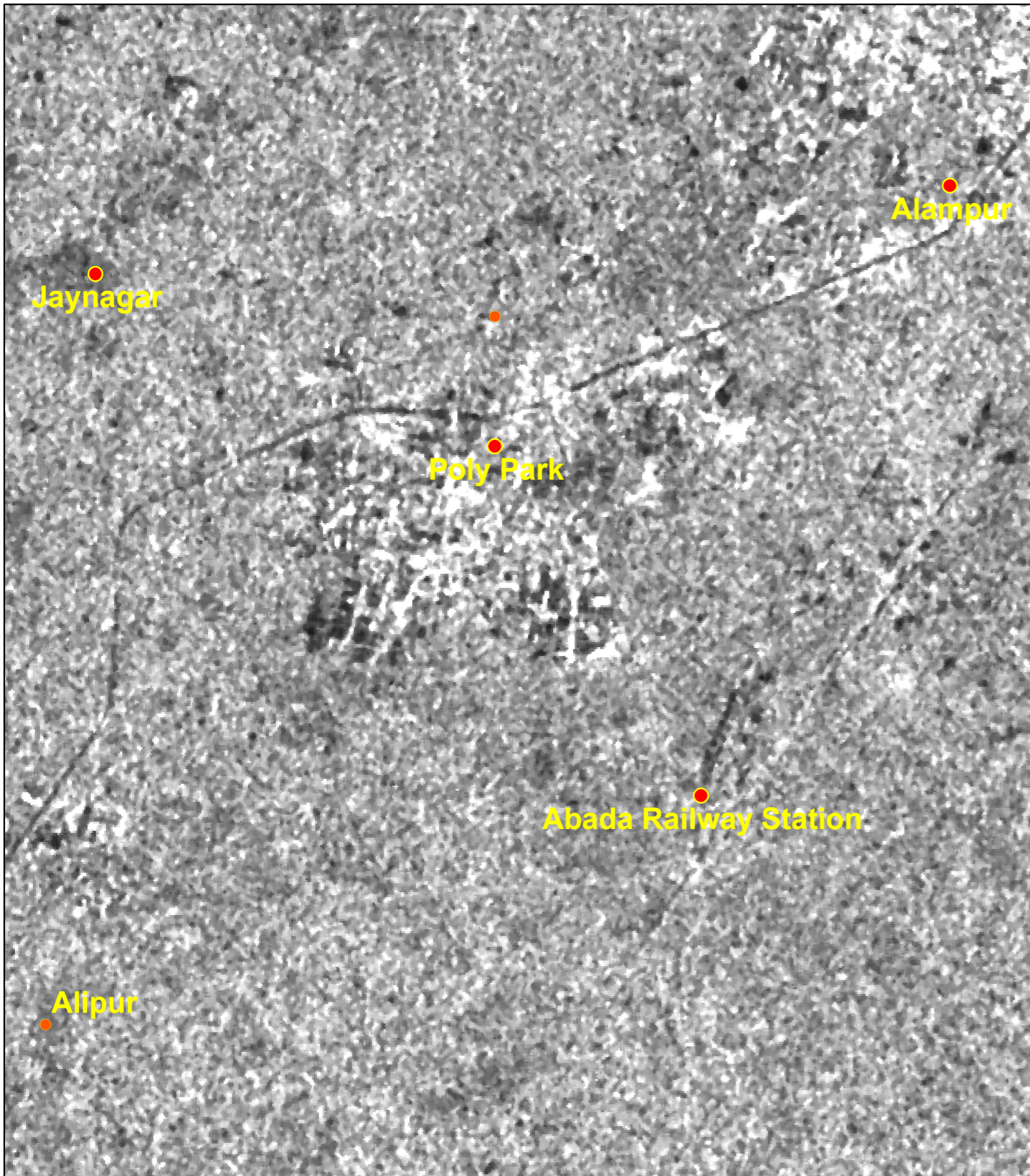


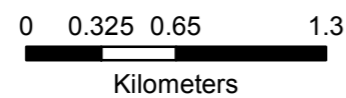
### Pre-Cyclone ( 28-Apr-2020) Image of Sentinel 1A SAR

### Post-Cyclone ( 21-May-2020) Image of ALOS 2 PALSAR



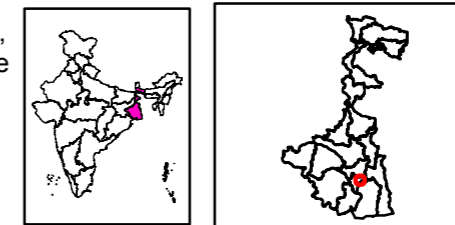
## Legend

- Settlements
- District Boundary



Note: When publishing this map as part of any report, source may be indicated as " NRSC (2020) - Cyclone affected areas in Part of West Bengal State (as on 21 May 2020)" dated 22.05.2020  
DSC/NDEM Map no : 2020/05, NRSC/ISRO, Hyderabad

Location Map



DSC / NDEM  
National Remote Sensing Centre, ISRO  
Dept. of Space, Govt. of India  
Hyderabad- 500 037  
E-Mail: flood@nrsc.gov.in  
www.nrsc.gov.in  
ALOS PALSAR -2 satellite image "© JAXA (2020), distribution JAXA , all rights reserved".